



Literacy Works

FISCAL YEAR 2022 IMPACT REPORT

At Literacy Works, we believe that all people should be able to access the information they need to thrive. We accomplish this through our two unique programs, Community Literacy & the Clear Language Lab, which work to:

- Provide robust professional development for the adult education sector through a social justice lens
- Make clear, understandable, human-centered communication the norm in mission-driven work

BY THE NUMBERS

1500+



individuals served

2000+



training seats filled

175+



learning engagements

250+



organizations impacted

"Being able to refer tutors to Literacy Works for initial training and being able to reach out for continued support is an invaluable resource."

Community Literacy Member

97% OF PARTICIPANTS FOUND TRAINING RELEVANT TO THEIR NEEDS.

"The Clear Language Lab helped my agency transform documents into messages that community members can access. It made a world of difference for people needing the information we want to share."

Clear Language Lab Client

99% OF PARTICIPANTS SAID TRAINING FACILITATORS WERE KNOWLEDGEABLE.

97% OF PARTICIPANTS WILL IMPLEMENT WHAT THEY LEARNED INTO THEIR WORK.

EXPANDING OUR REACH

Our strong partnership with the Secretary of State Illinois State Library has allowed our Community Literacy services to reach even more programs throughout the state of Illinois, including rural areas and other underserved communities. This year, we welcomed 13 new members from across the state.

With the continued expansion of the Clear Language Lab, we have been able reach across the country, training folx from California to Vermont. Nonprofit and governmental agencies from more than 20 states have benefited from our innovative programming this year.

Our Program Directors Keighty Ward and Melanie Sampson were asked to share their expertise across multiple platforms, from national conferences to local panels. Thanks to these events, we were able to share valuable resources with hundreds of additional people.

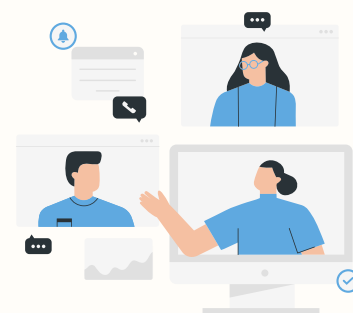
CREATING SUPPORTIVE SPACES



Our Community Literacy members continue to grow more and more reliant on Literacy Works to make and maintain connections within the Adult Literacy community.

Responding to the greater desire for information sharing and community building, this year we created support groups to address these needs. Monthly meetings of our **Tutor Support Group** and **Volunteer Coordinator Support Group** bring adult educators, administration staff, and volunteer tutors together in a welcoming and judgement-free environment. Additionally, we expanded our one-on-one offerings to provide more tailored support.

The Clear Language Lab's **Community of Practice** convenes clients to share their thoughts, experiences, and challenges while learning from each other. Our **Community Engagement Group** allows us to gather feedback on our work from people with unique perspectives and varied experience.



Literacy Works

[Tutor Training](#)

[Clear Language Lab](#)

[Donate](#)

[Learn more](#)